

## 2022 CATERPILLAR D416VP TRACK TYPE TRACTORS

### INSPECTION DETAILS

Inspection Type	Trade
Inspection Form	Standard
Inspection #	10049304
Inspection Status	Inspected
Created	06/30/23 07:48:58
Updated	06/30/23 11:28:45
Created By	Oelfke, Keith A.
Inspector	Oelfke, Keith A.
Reviewers	Oelfke, Keith A.
Salesperson	Lindenfelser, Matthew J.
Engine Serial #	J4A10353
Serial #	RLT00499
SMU / Hours	1,106
Location	RENVILLE, MN, United States



### CLIENT DETAILS

Name	
Company	3 E SOLUTIONS GROUP
Address	12275 239TH AVE NW
City	ELK RIVER
State	Minnesota
Country	United States
Postal Code	56284-2321
Email	
Phone	612-991-4261

### FEATURES

#### GENERAL

- ACCUGRADE READY
- AM FM RADIO
- ENGINE ENCLOSURES
- HAND AND FOOT CONTROL
- LIGHTING
- STABLE BLADE CONTROL
- AIR CONDITIONER
- BLADE, PAT  
*LGP*
- EPA LABEL  
*TIER 4 FINAL*
- HYD CONTROL
- PILOT CONTROL
- STEER, JOYSTICK
- AIR SUSPENSION SEAT  
*HEATED & COOLED*
- DRAWBAR  
*COUNTERWEIGHT 174 LB*
- EROPS
- LGP
- PRODUCT LINK  
*ELITE*
- ULTRA LOW SULFUR DIESEL FUEL

### NOTES

CAB ROPOS, HEATER, A/C, LIGHTS, RADIO USB, AIR SUSPENSION HEATED & COOLED SEAT, PRODUCT LINK ELITE, REARVIEW CAMERA, TIER 4 FINAL EMISSIONS, GLOW PLUGS, DRAWBAR COUNTERWEIGHT 174 LB, CAT GRADE 3D WITH SLOPE ASSIST, STABLE BLADE CONTROL, ATTACHMENT READY (ARO), AUTOMATIC TRACTION CONTROL, VARIABLE HYSTAT, PAT BLADE (LGP). NOTE: HAS CAT G/L STANDARD WARRANTY TO 9/18/23. NOTE: HAS EMISSIONS WARRANTY COVERAGE TO 9/18/27 OR 3,000 HRS. NOTE: HAS CAT HYDRAULIC ESC WARRANTY TO 9/18/26 OR 4,000 HRS. NOTE: HAS CAT POWERTRAIN ESC WARRANTY TO 9/18/26 OR 4,000 HRS. NOTE: HAS TRIMBLE WARRANTY TO 9/18/26 NOTE: HAS CAT TECHNOLOGY ESC WARRANTY TO 9/18/26 OR 4,000 HRS.

**CONDITION**

●●● Good

●● Fair

● Poor

Approved Repair

**GENERAL APPEARANCE**

**PARTS & LABOR TOTAL: 2750.00**

Battery Box

●●●

Belly Pans

●●

R&I BELLY PANS TO CLEAN OUT.

Labor: 950.00

Cab or Canopy

●●●

Counterweight

●●●

174 LB

Decals

●●●

Draw Bar

●●●

COUNTERWEIGHT.

Engine Enclosures

●●●

Fuel Tank

●●●

Grab Irons

●●●

Hood

●●●

Main Frame Welds

●●●

Paint

●●●

WILL LOOK NICE AFTER A GOOD CLEANING.

Pre-Cleaner Bowl

●●●

Radiator Grill

●●●

Sheet Metal

●●●

Cleaning Required

**YES**

NEEDS EXTENSIVE CLEANING.

Labor: 1800.00

S.O.S. Taken

**NO**

HAS SAMPLE RECORDS AT THIS CURRENT METER.

Notes - GENERAL APPEARANCE  
THE MACHINE IS STRAIGHT NEEDING  
A GOOD CLEANING INSIDE & OUT.

**SAFETY ITEMS**

Back Up Alarm

●●●

Horn

●●●

Parking Brake - SAFETY ITEMS

●●●

Rear View Camera  
●●●

Seat Belt / Date  
●●●

ROPS  
**YES**  
THE ROPS ARE CLEAN.

ROPS Certification Plate  
**YES**  
THE CERTIFICATION IS IN PLACE.

Safety Decals In Place / Legible  
**YES**

---

**GAUGES, OPERATOR STATION, CONSOLE**

**PARTS & LABOR TOTAL: 100.00**

Air Conditioner  
●●●  
COOLING.

Dash Console  
●●●

Door Latches / Seals  
●●●

Floor Boards / Mats  
●●●

Gauges  
●●●

Glass/Mirrors  
●●●

Headliner  
●●●

Heater  
●●●

Interior Lights  
●●●

Meter Replaced / Working  
●●●  
ACCURATE

Monitoring Panel / Display  
●●●

Radio Type & Condition  
●●●

Seat Cushion / Arm Rest  
●●●  
HEATED & COOLED.

Seat Suspension Type / Condition  
●●●  
AIR SUSPENSION.

Switches  
●●●

Windshield Wipers  
●●  
THE FRONT WIPER IS BROKEN  
SO NEEDS REPLACEMENT.  
Labor: 100.00

Current O&MM  
**YES**

---

**ENGINE**

**PARTS & LABOR TOTAL: 552.00**

Air Cleaners

●  
THE AIR CLEANER HOUSING IS  
BROKEN SO WILL NEED  
REPLACEMENT. 479-8987  
Parts: 302.00  
Labor: 250.00

Anti-Freeze Color / Level

●●●  
NORMAL COLOR & LEVEL.

Engine Supports

●●●

Fuel Injection System

●●●

Governor / Control

●●●

Oil Filter Condition / Service Hours

●●

THE OIL WAS JUST CHANGED &  
SAMPLED WITH SAMPLE  
RETURNING NORMAL.

Turbocharger / Blower

●●●

Blow By

**NO**

Compression in Radiator

**NO**

EPA Decal Legible

**YES**

TIER 4 FINAL.

Fluid Levels OK?

**YES**

Knocking

**NO**

Oil Leaks

**NO**

Water in Oil

**NO**

Notes - ENGINE

THE ENGINE IS RUNNING SMOOTH.

Oil Pressure (H/L/N)

NORMAL

Smoke Color (B/D/L/W)

NORMAL

---

**EMISSIONS**

After Treatment System

●●●

DPF Condition / Hours Changed

●●●

Leaks / Type

**NO**

Diesel Exhaust Fluid (DEF) Level

70%

Notes

THE EMISSIONS SYSTEM IS  
FUNCTIONING NORMAL.

**COOLING SYSTEM****PARTS & LABOR TOTAL: 350.00**Belts / Pulleys - COOLING  
SYSTEM  
●●●Coolers  
●●●Fan  
●●●Fan Drive / Type  
●●●  
HYDRAULICHoses  
●●●Radiator  
●●●Shroud / Guards  
●●●Water Pump  
●●●Leaks - COOLING SYSTEM  
**NO**Sand Blast Grid  
**NO**Standard Radiator  
**YES**

Notes - COOLING SYSTEM  
THE COOLING SYSTEM WILL NEED TO  
BE EXTERNALLY CLEANED DUE TO  
SOME DIRT BUILDUP IN CORES.  
THERE HAS BEEN RECENT  
OVERHEATS LOGGED.  
Labor: 350.00

**ELECTRICAL, STARTING AND CHARGING SYSTEM**Alternator  
●●●Batteries / Cables  
●●●Product Link / Condition  
●●●  
ELITEStarter  
●●●Wiring  
●●●Work Lights  
●●●Active Codes  
**NO****TRANSMISSION**Controls - TRANSMISSION  
●●●Cooler  
●●●Lines / Fittings - TRANSMISSION  
●●●

Operating Condition -  
TRANSMISSION  
●●●

Pump - TRANSMISSION  
●●●

Seals  
●●●

Temp / Pressure Gauges  
●●●

Valves  
●●●

Hydrostatic  
**YES**

Leaks - TRANSMISSION  
**NO**

Traction Control  
**YES**

Transmission - Noisy  
**NO**

Notes - TRANSMISSION  
THE HYSTAT IS PERFORMING  
NORMAL THROUGHOUT ALL SPEED  
SETTINGS AND AUTOMATIC  
CONTROL.

---

## STEERING

Steering Linkage  
●●●

Steering Operating Condition  
●●●

Steering Valve  
●●●

Notes - STEERING  
THE MACHINE IS STEERING NORMAL  
WITH GOOD CONTROL.

---

## BRAKE

Parking Brake Operation  
●●●

Service Brake Operation  
●●●

---

## HYDRAULICS

Angle Cylinder  
●  
THE L.H. ANGLE CYLINDER IS  
LEAKING LEVEL 3 SO WILL NEED  
RESEAL UNDER WARRANTY.

Control Linkage - HYDRAULICS  
●●●

Hose Lines  
●●●

Hydraulic Oil Filter Condition / Service Hours



THE OIL WAS JUST SAMPLED & IT RETURNED NORMAL.

Hydraulic Valves



Lift Cylinders



Overall Operating Condition



Pumps



Tank / Sight Glass / Cap



Tilt Cylinder



Leaks - HYDRAULICS

**YES**

SEE ANGLE CYLINDER

Notes - HYDRAULICS

THE HYDRAULICS ARE PERFORMING NORMAL SO RESEAL THE ANGLE CYLINDER UNDER WARRANTY.

---

## BLADE

Back of Blade



C Frame / Mounts / Bearings



Cutting Edge & Bits



CAN STILL BE TURNED.

Face / Moldboard



Pins



Spill Rack



Stabilizer Link



Tilt Arms



Trunnions



Notes - BLADE

THE BLADE IS TIGHT AND IN GOOD FUNCTIONAL CONDITION.

---

## UNDERCARRIAGE

Measurement (L)

% Worn (L)

Total Potential Hours (L)

Measurement (R)

% Worn (R)

Total Potential Hours (R)

Carrier Rollers Front	164MM	15	--	164MM	15	--
Carrier Rollers Rear	165MM	12	--	165MM	12	--
Idlers Front	25MM	9	--	25MM	9	--
Links	117MM	18	--	117MM	18	--
Pins & Bushings (External)	63.5MM	24	--	63.5MM	24	--
Segments	--	30	--	--	30	--
Track Roller 7	AVE 172.5MM	12	--	172.5MM	12	--
Track Shoe Grouser Height	52MM	16	--	52MM	16	--

Guiding Guard - Left



Guiding Guard - Right



Track Frame - Left



Track Frame - Right



Pins & Bushings Turned?

**NO**

Equalizer Bar

TIGHT

Idlers / Type

BOTH IDLERS WERE REPLACED 3-23  
359 HRS AGO.

Link / Brand / Part Number

106-1626 SALT LINKS.

Notes - UNDERCARRIAGE 1

THE U/C IS IN GOOD FUNCTIONAL  
CONDITION.

Track Shoes Width / Type

30 INCH EXTREME SERVICE SHOES.

## FINAL DRIVES

Housings, Left



Housings, Right



Planetaries / Differential, Left



Planetaries / Differential, Right





Notes - FINAL DRIVES

THE DRIVE OILS WERE JUST CHANGED  
& SAMPLED WITH BOTH SAMPLES  
RETURNING NORMAL.

---

**COMMENTS, MISC. REPAIRS, GENERAL REMARKS**

comment 1

THE MACHINE HAS GOOD  
OPERATION & PERFORMANCE WITH  
SMOOTH ENGINE AND HYSTAT THAT  
OPERATES NORMALLY. THE DOZER IS  
TIGHT AND THE U/C IS IN GOOD  
FUNCTIONAL CONDITION. THE  
MACHINE WILL NEED ONE ANGLE  
CYLINDER RESEALED THAT  
WARRANTY SHOULD COVER AND A

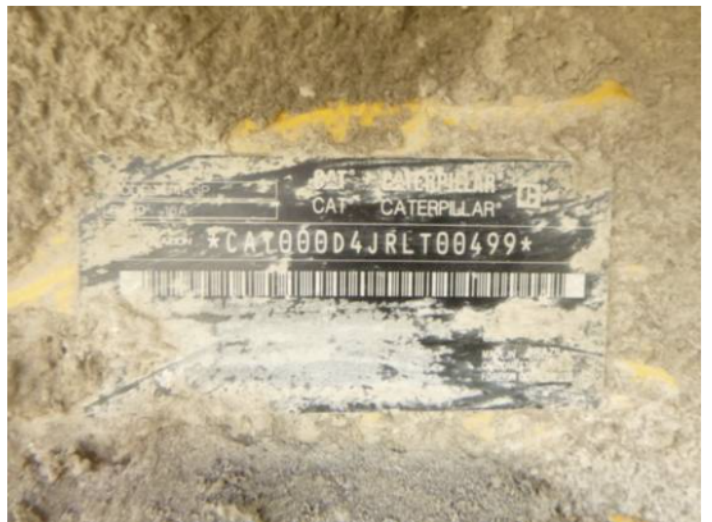
comment 2

GOOD CLEANING THROUGHOUT  
SINCE IT IS SO NEW. THE GPS SYSTEM  
IS FUNCTIONAL.

comment 4

LEVEL 3PM COMPLETED AT CURRENT  
METER. NEXT SERVICE DUE IS A LEVEL  
1PM IN 250 HRS.

MARKETING PHOTOS (8)





## CONDITION PHOTOS (13)

- Draw Bar  
COUNTERWEIGHT.



- YES ROPS Certification Plate  
THE CERTIFICATION IS IN PLACE.



- Meter Replaced / Working  
ACCURATE



- Seat Cushion / Arm Rest  
HEATED & COOLED.



- Air Cleaners  
THE AIR CLEANER HOUSING IS  
BROKEN SO WILL NEED  
REPLACEMENT. 479-8987  
Parts: 302.00  
Labor: 250.00



- Face / Moldboard





Measurement (L)

% Worn (L)

Total Potential Hours (L)

Measurement (R)

% Worn (R)

Total Potential Hours (R)

Pins & Bushings (External)

63.5MM

24

63.5MM

24



Measurement (L)

% Worn (L)

Total Potential Hours (L)

Measurement (R)

% Worn (R)

Total Potential Hours (R)

Segments

30

30



	Measurement (L)	% Worn (L)	Total Potential Hours (L)	Measurement (R)	% Worn (R)	Total Potential Hours (R)
Track Roller 7	AVE 172.5MM	12		172.5MM	12	

