

2022 CATERPILLAR 930M WHEEL LOADER

INSPECTION DETAILS

Inspection Type	Trade
Inspection Form	Standard
Inspection #	10049365
Inspection Status	Inspected
Created	06/30/23 10:15:35
Updated	06/30/23 11:18:09
Created By	Oelfke, Keith A.
Inspector	Oelfke, Keith A.
Reviewers	Oelfke, Keith A.
Salesperson	Lindenfelser, Matthew J.
Transmission Serial #	2X312674
Engine Serial #	J7A25446
Serial #	J5K00517
SMU / Hours	676



CLIENT DETAILS

Name	
Company	3 E SOLUTIONS GROUP
Address	12275 239TH AVE NW
City	ELK RIVER
State	Minnesota
Country	United States
Postal Code	56284-2321
Email	
Phone	612-991-4261

FEATURES

GENERAL

- 3RD VALVE
- AIR CONDITIONER
- AM FM CD RADIO
- AUTO SHIFT
- AUXILIARY HYDRAULICS
- BEACON
- BLUETOOTH
- BUCKET
- COUNTERWEIGHT
- COUPLER, HYDRAULIC
- *5.5 YD LM BUCKET 345-2768*
- *2,668 LB*
- *CAT FUSION*
- DIFF LOCK/UNLOC
- DIFFERENTIAL, LIMITED SLIP
- ENGINE ENCLOSURES
- *FRONT*
- *REAR*
- HIGH LIFT
- LIGHTING
- EROPS
- RIDE CONTROL
- ULTRA LOW SULFUR DIESEL
- FUEL
- PRODUCT LINK
- *AUTOMATIC*
- *ELITE*
- WEIGHT MONITORING SYSTEM
- *CAT INTEGRATED PAYLOAD MEASUREMENT SYSTEM.*

NOTES

CAB ROPS, HEATER, A/C, LIGHTS, STROBE, RADIO CD USB & BT, HEATED & POWER MIRRORS, REAR WINDOW DEFROST, REARVIEW CAMERA, PRODUCT LINK ELITE, AIR SUSPENSION SEAT, EITHER AID, ENGINE COOLANT HEATER, COUNTERWEIGHT 2,868 LB, HYDRAULIC AUTO REVERSING FAN, THROTTLE LOCK, CREEPER CONTROL, RIM PULL FEATURE, IMPLEMENT SHIFTER ONLY, INTEGRATED CAT PAYLOAD MEASUREMENT SYSTEM, LIMITED SLIP DIFFERENTIAL REAR & DIFF LOCK FRONT, HYDROSTATIC DRIVE, AUTO SHIFT, AUTO RIDE CONTROL, 3 VALVE HYDRAULICS WITH SINGLE LEVER

CONTROL, CONTINUOUS FLOW AUX CIRCUIT, HIGH LIFT LOADER FRAME, FUSION WEDGE STYLE COUPLER, 5.5 YD CAT LIGHT MATERIAL HANDLING BUCKET 345-2768. NOTE: HAS CAT G/L STANDARD WARRANTY TO 9/18/23. NOTE: HAS EMISSIONS WARRANT COVERAGE TO 9/18/27 OR 3,000 HRS. NOTE: HAS CAT POWERTRAIN ESC WARRANTY TO 9/18/27 OR 6,000 HRS.

CONDITION

●●● Good

●● Fair

● Poor

Approved Repair

GENERAL CONDITION

Body

●●●

Frame

●●●

General

●●●

ET Download Available

YES

Machine Starts and is Operable

YES

S.O.S. (All Compartments)

NO

Tires are Aired Up and Drivable

YES

GENERAL APPEARANCE

PARTS & LABOR TOTAL: 3170.00

Cab or Canopy

●●●

Counterweight

●●●

Crankcase Guard / Battery Box

●●●

Decals

●●●

Differential Supports

●●●

Eng. Enclose Hood / Stack

●●●

Fenders

●●●

Front Frame

●●●

Fuel Tank

●●●

Grab Irons

●●●

Paint

●●●

WILL LOOK NICE AFTER A GOOD CLEANING.

Pre-Cleaner Bowl

●●●

Radiator Grill & Shroud

●●●

Rear Frame

●●●

Sheet Metal

●●●

Steps / Ladder

●
THE L.H. PLATFORM STEP IS BENT ON THE VERTICAL MOUNTS AND ONE BELT IS TORN. RECOMMEND REPLACEMENT OF VERTICAL MOUNTS AND ONE BELT.

Parts: 870.00
Labor: 500.00

Cleaning Required

YES
WILL NEED EXTENSIVE CLEANING.

Labor: 1800.00

S.O.S. Taken

NO

Notes - GENERAL APPEARANCE
THE MACHINE IS STRAIGHT SO WILL NEED A GOOD CLEANING INSIDE & OUT.

SAFETY ITEMS

Brake Hold



Horn



Parking Brake - SAFETY ITEMS



ROPS



THE ROPS ARE CLEAN.

Seat Belt - SAFETY ITEMS



Back Up Alarm Functioning

YES

Brakes Functioning

YES

Safety Decals In Place

YES

Safety Decals Legible

YES

GAUGES, OPERATOR STATION, CONSOLE

Air Conditioner



COOLING

Dash Console



Door Latches



Door Latches & Hinges
●●●

Doors
●●●

Floor Boards
●●●

Floor Mats
●●●

Gauges
●●●

Glass/Mirrors
●●●

Heater
●●●

Interior Lights
●●●

Meter
●●●
ACCURATE

Product Link
●●●
ELITE

Seat Cushion / Arm Rest
●●●

Switches
●●●

Windshield Wipers
●●

Back Up Alarm
YES

Current O&MM
YES

ROPS Certification Plate
YES
CERTIFICATION IS IN PLACE.

Sound Proofing
YES

ENGINE

Air Cleaners
●●●
AIR CLEANER FILTER IS
NORMNAL.

Belts / Pulleys - ENGINE
●●●

EMISSIONS SYSTEM
●●●
THE EMISSIONS SYSTEM IS
FUNCTIONING NORMAL.

Engine Supports
●●●

Exhaust / Muffler
●●●

Fuel System
●●●

Governor
●●●

Oil Filter Condition (CUT) -
ENGINE
●●
OIL WAS CHANGED & SAMPLED
164 HRS AGO WITH SAMPLE
RETURNING NORMAL.

Operating Condition - ENGINE
●●●

Turbocharger
●●●

Blow By
NO

Compression in Radiator
NO

Engine Oil Level Full
NO

EPA Decal
YES
TIER 4 FINAL.

Fluid Levels OK?
YES

Fuel Leaks
NO

Knocking
NO

Oil filter Cut and Inspected
NO

Oil Leaks
NO

Water in Oil
NO

Anti-Freeze Color
NORMAL COLOR AND LEVEL.

Notes - ENGINE
THE ENGINE IS RUNNING SMOOTH.

Oil Pressure (H/L/N)
NORMAL

Smoke (B/D/L/W)
NORMAL

COOLING SYSTEM

Coolers
●●●

Fan
●●●

Fan Drive
●●●
HYD

Hoses
●●●

Hoses & Tubes - COOLING
SYSTEM
●●●

Radiator
●●●

Water Pump
●●●

Oil in Anti-Freeze
NO

Notes - COOLING SYSTEM
THE COOLING SYSTEM IS
FUNCTIONING NORMAL IN 80
DEGREE WEATHER.

ELECTRICAL, STARTING AND CHARGING SYSTEM

Alternator
●●●

Batteries / Cables
●●●

Beacon
●●●

Lighting
●●●

Starter
●●●

Wiring
●●●

Block Heater
YES

Ether Aid
YES

TRANSMISSION

Case
●●●

Controls - TRANSMISSION
●●●

Cooler
●●●

Drive Shaft
●●●

Lines / Fittings - TRANSMISSION
●●●

Oil Filter Condition (CUT) -
TRANSMISSION
●●
OIL WAS SAMPLED 164 HRS
AGO WITH SAMPLE RETURNING
NORMAL.

Operating Condition -
TRANSMISSION
●●●

Pump - TRANSMISSION
●●●

Seals
●●
THERE IS OIL ON THE FRONT OF
TEH TRANSEWR CASE FROM
THE BREATHER SO WASH IT
OFF.

Temp / Pressure Gauges
●●●

Transmission - Forward Shifts
●●●

Transmission - Reverse Shifts
●●●

Universal Joints -
TRANSMISSION
●●●

Leaks - TRANSMISSION
NO

Mag Screens Checked
NO

Transmission - Noisy
NO

Notes - TRANSMISSION
THE HYSTAT IS PERFORMING
NORMAL IN ALL SPEED SETTINGS.

STEERING

Articulate P & B
●●●

Hand Metering Unit
●●●

Lines / Fittings - STEERING
●●●

Steering Cylinder
●●●

Steering Linkage
●●●

Steering Valves / Pumps
●●●

Steering Wheel Tilt / Extend
●●●

Valves
●●●

Notes - STEERING
THE MACHINE IS STEERING NORMAL.

BRAKE

Accumulator
●●●

Control Valve
●●●

Lines
●●●

Parking Brake - BRAKE
●●●

Pedal
●●●

Pump - BRAKE
●●●

Type (Wet, Dry)
●●●
WET INTERNAL.

Holds In Park
YES

Leaks - BRAKE
NO

Notes - BRAKE
ALL BRAKES ARE FUNCTIONING
NORMAL.

HYDRAULICS

PARTS & LABOR TOTAL: 1626.00

Accumulator Charge - Ride Control



ACCUMULATORS WERE REPLACED 164 HRS AGO.

Bucket & Hoist Kickout



Control Linkage



THE IMPLEMENT CONTROL LEVER IS STICKY. THE RUBBER IS BREAKING DOWN LIKE SOMETHING WAS PUT ON IT. RECOMMEND REPLACEMENT SINCE IT WILL BE AN ISSUE IF WE TRY TO SELL IT. 356-5209
Parts: 916.00
Labor: 350.00

Filter Condition (CUT)



OIL WAS SAMPLED 164 HRS AGO WITH SAMPLE RETURNING NORMAL.

Hose Lines



Hoses & Tubes - HYDRAULICS



THE L.H. AUX HOSE FROM THE LOADER FRAME TO THE COUPLER IS MISSING. 561-8837
Parts: 185.00
Labor: 175.00

Lift Cylinders



Overall Operating Condition



Pumps & Valves



Tank



Tilt Cylinder



Notes - HYDRAULICS

THE HYDRAULICS ARE FUNCTIONING NORMAL.

BUCKET

PARTS & LABOR TOTAL: 1470.00

Bucket Bottom



Bucket Floor



Bucket Linkage - BUCKET 1



TIGHT

Bucket Sides



Cutting Edges



THE BASE EDGE IS IN GOOD CONDITION.

Loader Frame



Loader Pins & Bushings
●●●

Quick Coupler
●●●
FUSION

Segments
●●
THE CUTTING EDGE WILL NEED TO BE REPLACED.
Parts: 1120.00
Labor: 350.00

High Lift
YES

Bucket S/N - BUCKET 1
345-2768

Bucket Size
5.5 YDS

Notes - BUCKET
THE BUCKET IS IN GOOD FUNCTIONAL CONDITION BUT NEEDS THE EDGES REPLACED. THE LINKAGES ARE TIGHT.

FINAL DRIVES

PARTS & LABOR TOTAL: 177.00

Differentials
●●●

Front Axle
●●●

Rear Axle
●●●

Rear Final Drives
●●●

Trunion
●●●

Wheel Lugs & Rims - FINAL DRIVES
●●
THE R.H. REAR RIM LOCK IS MISSING SO ONE WILL NEED TO BE INSTALLED. 604-8219
Parts: 27.00
Labor: 150.00

Leaks - FINAL DRIVES
NO

Notes - FINAL DRIVES
BOTH AXLE OILS WERE SAMPLED 164HRS AGO WITH SAMPLES RETURNING NORMAL.

TIRES

	Make / Serial#	Tread Depth in 1/32"	% Life Remaining	Recapped	Tread Cuts/Chunks	Side Cuts Section
Left Front	MICHELIN XHA2	==	90	NO	NO	NO

Left Rear	MICHELIN XHA2	--	90	NO	NO	NO
Right Front	MICHELIN XHA2	--	90	NO	NO	NO
Right Rear	MICHELIN XHA2	--	90	NO	NO	NO

Notes - TIRES

ALL TIRES ARE IN GOOD FUNCTIONAL CONDITION.

Tire Size - TIRES

20.5R25

COMMENTS, MISC. REPAIRS, GENERAL REMARKS

comment 1

THE MACHINE IS IN GOOD FUNCTIONAL CONDITION WITH SMOOTH ENGINE & NORMAL PERFORMING HYSTAT. THE LINKAGES ARE TIGHT SO I RECOMMEND THE ABOVE LISTED REPAIRS

comment 4

LEVEL 2PM COMPLETED 164 HRS AGO SO THE NEXT SERVICE DUE IS A LEVEL 1PM IN 86 HRS.

MARKETING PHOTOS (8)



CONDITION PHOTOS (15)

- Steps / Ladder
THE L.H. PLATFORM STEP IS BENT ON THE VERTICAL MOUNTS AND ONE BELT IS TORN. RECOMMEND REPLACEMENT OF VERTICAL MOUNTS AND ONE BELT.
Parts: 870.00
Labor: 500.00



- Meter
ACCURATE



- YES ROPS Certification Plate
CERTIFICATION IS IN PLACE.



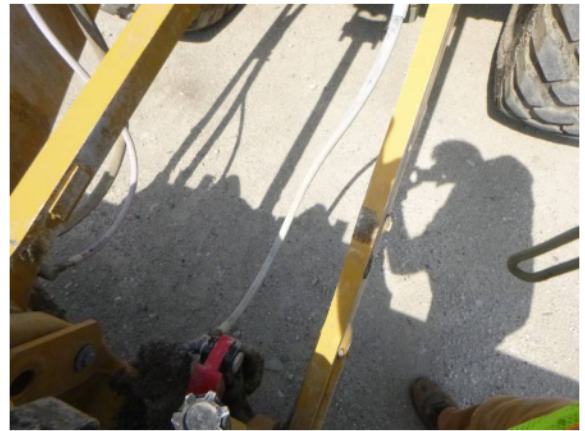
- YES EPA Decal
TIER 4 FINAL.



- Control Linkage
THE IMPLEMENT CONTROL LEVER IS STICKY. THE RUBBER IS BREAKING DOWN LIKE SOMETHING WAS PUT ON IT. RECOMMEND REPLACEMENT SINCE IT WILL BE AN ISSUE IF WE TRY TO SELL IT. 356-5209
Parts: 916.00
Labor: 350.00



- Hoses & Tubes - HYDRAULICS
THE L.H. AUX HOSE FROM THE LOADER FRAME TO THE COUPLER IS MISSING. 561-8837
Parts: 185.00
Labor: 175.00



- Bucket Bottom



●●● Bucket Floor



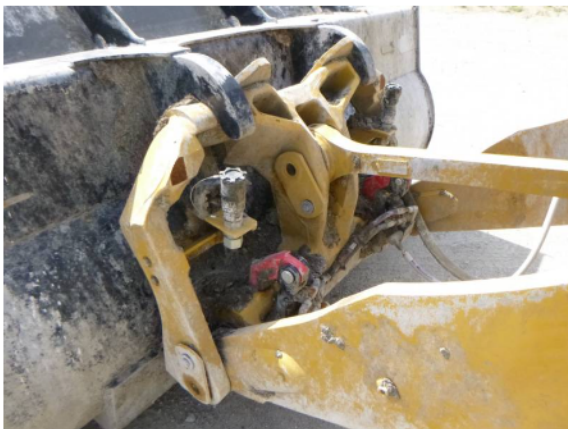
●●● Bucket Sides



●●● Cutting Edges
THE BASE EDGE IS IN GOOD
CONDITION.



●●● Quick Coupler
FUSION



●● Wheel Lugs & Rims - FINAL
DRIVES
THE R.H. REAR RIM LOCK IS
MISSING SO ONE WILL NEED
TO BE INSTALLED. 604-8219
Parts: 27.00
Labor: 150.00



Bucket S/N - BUCKET 1
345-2768

