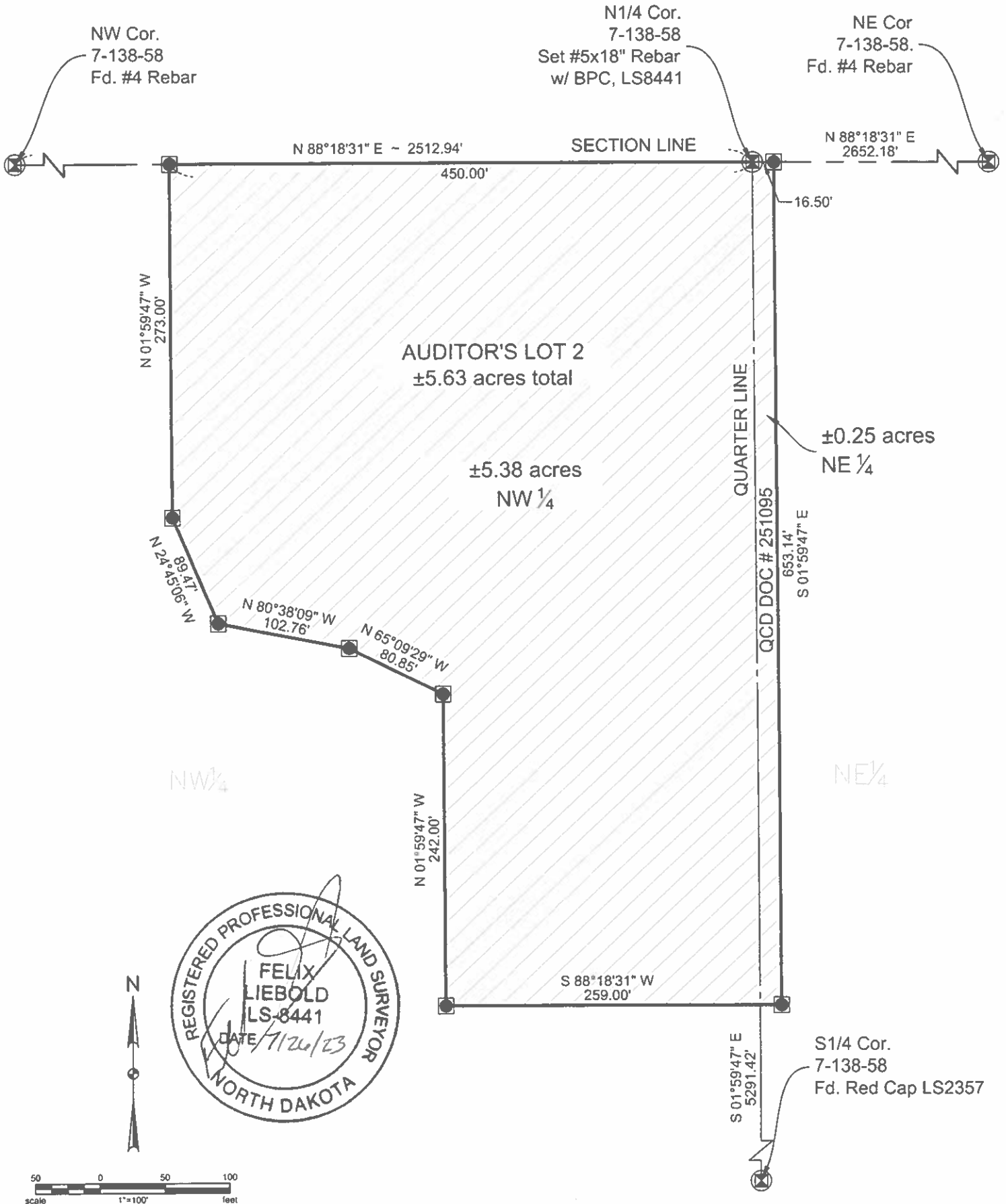
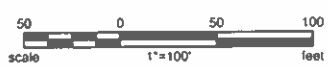


**PLAT OF AUDITOR'S LOT NUMBER 2  
IN THE NORTH HALF (N<sup>1</sup>/<sub>2</sub>), SECTION 7,  
TOWNSHIP 138 N., RANGE 58 W., 5TH P.M.,  
NELSON TOWNSHIP, BARNES COUNTY, NORTH DAKOTA**



REGISTERED PROFESSIONAL LAND SURVEYOR  
 FELIX LIEBOLD  
 LS-8441  
 DATE 7/26/23  
 NORTH DAKOTA



BASIS OF BEARING : US STATE PLANE COORDINATE SYSTEM,  
 NORTH DAKOTA SOUTH ZONE, NAD83 (2011)  
 UNITS : INTERNATIONAL FEET  
 NOTE : DISTANCES SHOWN ARE GROUND DISTANCES,  
 USE A CONVERSION FACTOR OF 0.9998710 TO  
 CONVERT GROUND DISTANCES TO GRID DISTANCES

- PLSS CORNER
- SET #5X18\" REBAR W/ BPC, LS8441

VALLEY CITY, NORTH DAKOTA



**PLAT OF AUDITOR'S LOT NUMBER 2  
IN THE NORTH HALF (N½), SECTION 7,  
TOWNSHIP 138 N., RANGE 58 W., 5TH P.M.,  
NELSON TOWNSHIP, BARNES COUNTY, NORTH DAKOTA**

**DESCRIBED AS FOLLOWS:**

A tract of land situated in the North Half (N½) of Section 7, Township 138 North, Range 58 West of the Fifth Principal Meridian, Nelson Township, Barnes County, North Dakota, more particularly described as follows:

Beginning at the north quarter corner of said N½; thence N88°18'31"E along the north boundary line of said N½ a distance of 16.50 feet; thence S01°59'47"E parallel to the north-south quarter line of said N½ a distance of 653.14 feet; thence S88°18'31"W parallel to said north boundary line a distance of 259.00 feet; thence N01°59'47"W parallel to said north-south quarter line a distance 242.00 feet; thence N65°09'29"W a distance of 80.85 feet; thence N80°38'09"W a distance of 102.76 feet; thence N24°45'06"W a distance of 89.47 feet; thence N01°59'47" parallel to said north-south quarter line a distance of 273.00 feet to said north boundary line; thence N88°18'31"E along said north boundary line a distance of 450.00 feet to the Point of Beginning.

Said tract contains 5.63 acres, more or less, and is subject to any easements, restrictions or reservations either existing or of record.

